

## - INVESTMENT

### ASSET ALLOCATION

### IPE QUEST EXPECTATIONS INDICATOR



▲ **Rise** ↑ Positive shift (from last month)

■ **Stable** – No view

▼ **Fall** ↓ Negative shift (from last month)

IPE polled 58 asset managers this month on their six to 12-month views on regional equities, global bonds and currency pairs as shown below. A summary of the results follows the survey.

	Location	EQUITIES					BOND PRICES				CURRENCIES		
		US	Euro-zone	Japan	Asia	UK	\$	¥	£	€	\$/€	\$/¥	\$/£
Actiam	Neth	▲↑	▲↑	▲↑	▲↑	▲↑	▼↓	▼↓	▼↓	▼↓	▼↓	▼↓	▼↓
AllianceBernstein	US/UK	▲	▲	▲	▲	▲	■	■	■	■	▲↑	▼	▲↑
Allianz Global Investors	Ger/UK	▼	▼	■	▼	■	▼	■	▼	▼	■	■	■
Allspring Global Investments	US/UK	▼↓	▼↓	■	▲↑	■	▼	■	▼	▼	■	■	■
Amundi Asset Management	Fra	▲	▼	■	■	■	▼	■	■	■	▲	■	▲
Apo Asset Management	Ger	▲	▲	▲	▲	▲	■↑	■↑	■↑	■↑	■↓	▲↑	■↓
BankInvest	Den	■	■	▲	■	■	▼	▼	▼	▼	■	▲	▲
Bank J. Safra Sarasin	Swi	■	▼	■	■	▼	▲↑	■	■↑	■↑	■	▼	▲↑
Bantleon Bank	Swi	■↓	■↓	■↓	■↓	–	▲↑	–	–	■↑	■	–	–
Berenberg Wealth & Asset Mngt.	Ger	▲↑	■↓	■	▲	▲	▲↑	▼	■	▼	■	▲	■
BNY Mellon Inv. Mngt. EMEA	UK	▲	▼↓	▲	■	■	▲↑	▼	▼	▼	■	■	■
CBL Asset Management	Lat	▼	▼	–	–	–	▲	–	–	■	▼↓	–	–
Columbia Threadneedle Inv.	US	■	■	■	■	▲	■	■	■	■	■	■	■
Currency Research Associates	US	▼	▼	▼	▼	▼	■	▼↓	■	■	▼	▼	▼
DWS Investment	Ger	▲	▲	■↓	▲	▲↑	■↑	■	▼↓	▼↓	▼↓	▼	▲
Econopolis Wealth Management	Bel	▲↑	■	■	▲↑	■	■↑	■	■↑	■↑	■↓	■↓	■↓
Edmond de Rothschild AM	Fra	■	▼	▼	■	■	■	■	▼	▼	■	■	▲
Erste Asset Management	At	■	■	■	■	■	■↑	■	■↑	■↑	▲	■↓	■
Eurizon Capital	It	■	■	■	■	■	■	■	■	■	■	▼	■
Fideuram Asset Management	It	▲	▼	■	■	▲	■	▼	■	▲	■	▼	▼
Fonditel	Spa	▼↓	▼↓	▼↓	▼↓	▼↓	■↑	▼	▼	▼	▼↓	■	▼
Franklin Templeton Inv. Solutions	UK	▲	▼	▲	■	■	▼	■	■	■	■	■	■
Generali Investments Europe	Ger/It	■↓	■↓	■↓	■↓	■↓	▼	▼	▼	▼	▼	▼	▼
GNB Gestao Activos	Por	▲	▲	▲	▲	▲	▲	■	■	■	▼	■	■↑
Graphene Investments	Fra	■	■	▲	■	▼	–	–	–	–	■	▲	▼
Hauck Aufhäuser Lampe	Ger	–	▲	–	–	–	▼↓	■	▼↓	▼↓	▼	▲	▲
Irish Life Investment Managers	Ire	▼	▼	■	▼	■	▼↓	■	▼↓	■	▲↑	■↓	▲
Janus Henderson Investors	UK	■	■	■	▲	▲	▼	▼	▼	▼	■	▲	■

	Location	EQUITIES					BOND PRICES				CURRENCIES		
		US	Euro-zone	Japan	Asia	UK	\$	¥	£	€	\$/€	\$/¥	\$/£
La Française AM	Fra	▼	▼	▼	■↑	▼	▲↑	▲↑	▲↑	▲↑	▲↑	▼↓	▲↑
LGT Capital Partners	Swi	■	■	■	▼	■	▼	▼	▼	▼	▲	■	■
Lyxor Asset Management	France	■	■	■	■	■	■	■	▼	▼	▲	▲	▲
Mandarine Gestion	Fra	■	▲	▲	▲	▲	▼	■	▼	▼	■	▲	■
Manulife Investment Mngt.	US	▲	▲	▲	▲	▲	▼	▼	▼	▼	■	■	■
MEAG		▲	▲	▲	▲	▲	■	■↑	■	■	■↓	■↓	■↓
Medical Strategy	Ger	▼	▼	▼	▼	▼	▼	▼	▼	▼	▲	▲	▲
MFI Asset Management	Ger	▲	▲	▲	▲	▲	■	■	■	■	▼	▼	▼
Morgan Stanley Inv. Mngt.	UK/US	▲	▲	■	■	▲	▲	■	■	▼	▼	▼	▼
Muzinich & Co.	UK	■↑	▼	▼	■↑	▼	■	▼↓	■	■↑	■↑	▼↓	■↓
Ninety One	UK	▼	▼	■	■	▼	▲	■	▲	▲	▲	■	▲
NN Investment Partners	Neth	■	▼	■	■	▲	▼	▼	▼	▼	■	▲	■
Northern Trust Asset Mngt.	US	▲	▲	▲	▲	▲	▲↑	■	▲	▲↑	■	■↑	■
Nuveen	US	▲	▲	▲	▲	▲	▲↑	■	■	■	■↑	■↑	■↑
Oddo BHF Asset Management	Ger	▼	■	■	■	■	▼	■	▼	▼	▲	▲	▲
OFI Asset Management	Fra	▲	▲	▲	▲	▲	▲↑	▼	■	■	▼	▼	■
ONE Swiss Bank	Swi	■	■	■	▲↑	■	■↑	▼↓	■↑	■↑	■↓	■↓	■↓
Ostrum Asset Management	Fra	■↓	■↓	■↓	■↓	■↓	■↑	▼↓	▼	■↑	▼	▼	■
Patrizia	Ger	■	■	■	■↓	■	▼	■↑	▼	▼	■↓	■↓	■↓
Pictet Asset Management	Swi	▼	▼↓	▲↑	▲↑	▲↑	▲	■	■	▼↓	■	▼	■↓
PineBridge Investments	US	■↑	■↑	▲↑	■	■↑	▲↑	■	▼↓	■	▲↑	▲	■
Putnam Investments	US/UK	▼	▼	▼	▼	▼	▲↑	■	▲↑	▲↑	■↓	▲↑	■↓
Russell Investments	US	▲	▲↑	■	▲↑	■	▼	■	▼	▼	▲	■	■↓
Salus Alpha Capital	Liecht	▲	▲	▲	▲	▲	▲	■	▲	■	■	▲	■
SEB Investment Management	Swe	▲	▲	-	▲	■	▲	■	▲	▲	■	▲	■
Swiss Life Asset Managers	Swi	▲	▲	▲	▲	▲	▼	▼	▼	▼	■	▼	■
Tokio Marine Asset Mngt.	Jap/UK	▲	▲	▲	▲	▲	▲↑	■	▲↑	▲↑	■↓	▲↑	■↓
Unigestion	Swi	▼	▼	▼	▼	■	▲	■	■	▲	▼	▼	■
Union Bancaire Privée	Swi	▼	▼	▼	■↑	▼	▼	■↑	▼	▼	▼	▼↓	■
Union Investment Institutional	Ger	■	■	■	■	■	▼	■	▼	▼	▼	■	■
% predicting rise (previous month)		40 (41)	33 (36)	36 (39)	41 (38)	40 (37)	33 (16)	2 (0)	13 (11)	14 (9)	21 (26)	29 (34)	23 (36)
% predicting stability (previous month)		35 (34)	31 (32)	47 (46)	45 (44)	42 (43)	30 (38)	65 (69)	40 (40)	40 (38)	53 (48)	39 (36)	63 (48)
% predicting fall (previous month)		25 (25)	36 (32)	17 (15)	14 (18)	18 (20)	37 (46)	33 (31)	47 (49)	46 (53)	26 (26)	32 (30)	14 (16)

# ASSET ALLOCATION

## IPE QUEST EXPECTATIONS INDICATOR



### Dramatic divide

The war in Ukraine has reached stalemate. Neither party is capable of a surprise win, but time works against Russia. Can Zelensky keep the army motivated to continue? A long, hot European summer is driving home the realities of climate change, while the US is floating back to sterile bickering and partisan inaction. US legal changes on abortion have deepened the values gap with European nations, gnawing at trans-Atlantic co-operation.

Analysts were surprised by the larger than expected increase in US interest rates, while reacting positively on Boris Johnson's departure. Meanwhile, worries on inflation or central bank over-reaction seem to be increasing.

### Asset allocation

If asset prices seem uncorrelated, expectations are also divided, but in a more logical way. In the current circumstances, one can be optimistic on bonds or pessimistic on equity. The first approach reigns in the US market, where bond expectations are now close to zero, while in the EU equity expectations remain significantly lower than in other regions and are now below zero.

This dramatic divide is the logical consequence of a difference on longer-term perspectives, fed by views on the effects of the Russian war. The divide is a major opportunity to invest in accordance with or against the majority view.

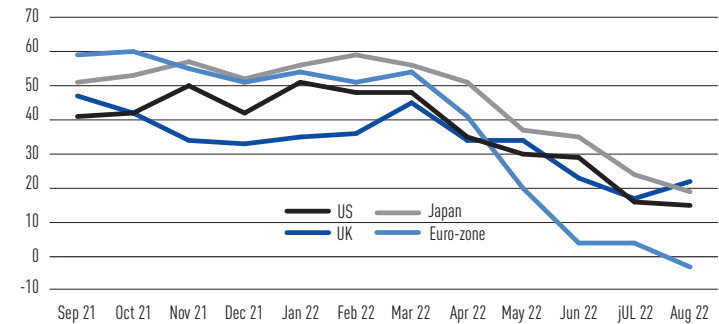
Last month, in all regions, the neutral vote on bonds had risen above or looked set to rise above that on equity. Markets seem to have had second thoughts this month. Net bond sentiment ranges from -31 to -34, except in the US, where it stands at -4.

### Country allocation

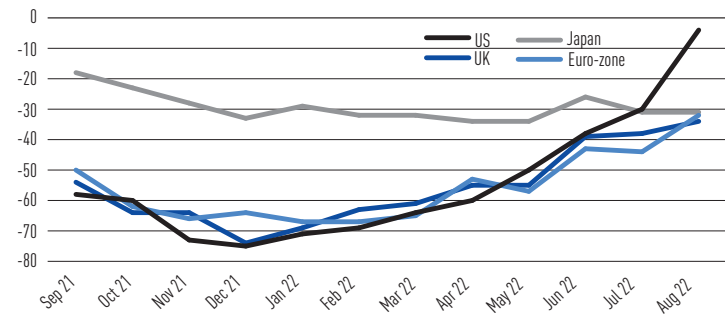
Net equity sentiment is down in all regions, except the UK, which may have to do with the end of a period in which the UK will be on hold, as Johnson will eventually step down. Net bond sentiment is still rising, except in Japan, where it remains eerily stable. Are the EU equity figures or the US bond expectations a foretaste of things to come? That is the elementary question for the coming weeks.

**PETER KRANEVELD,**  
INTERNATIONAL PENSIONS  
ADVISER, PRIME BV

### Net sentiment equities



### Net sentiment bonds

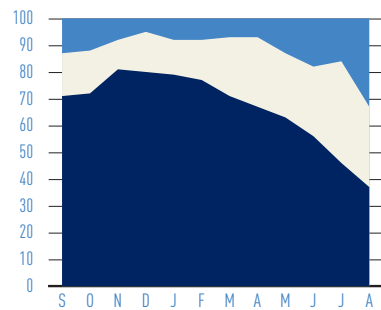


#### KEY FOR EXPECTATIONS GRAPHS

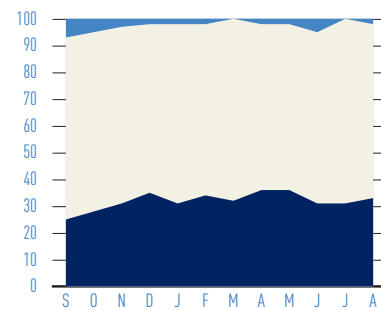
- % of managers expecting rise
- % of managers expecting stability
- % of managers expecting fall

Each month, IPE polls asset managers on their six to 12-month views on regional equities, global bonds and currency pairs as shown below. For more details see previous pages

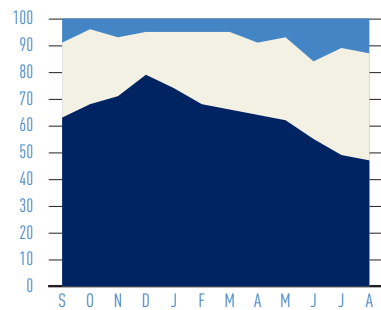
#### \$ BONDS



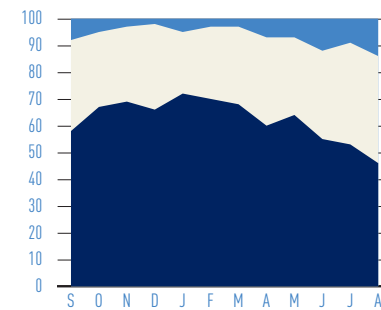
#### ¥ BONDS



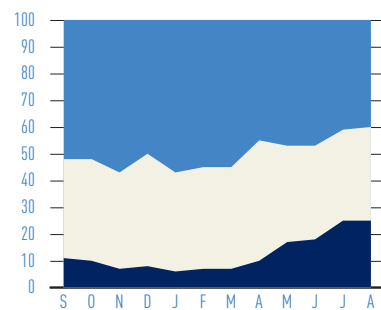
#### £ BONDS



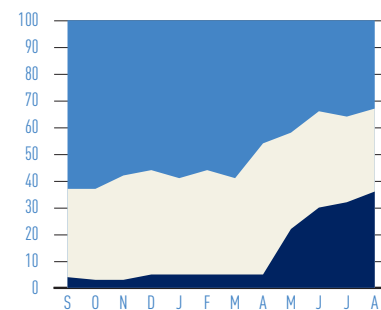
#### € BONDS



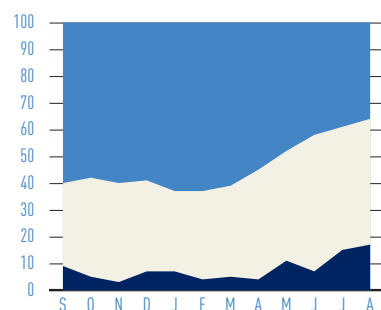
#### US EQUITIES



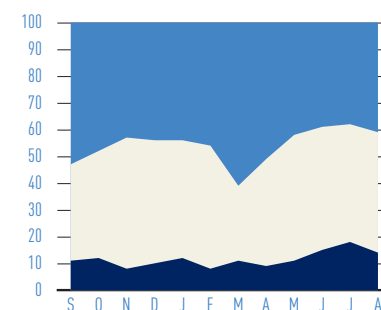
#### EURO-ZONE EQUITIES



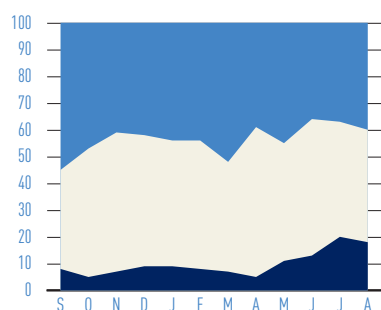
#### JAPAN EQUITIES



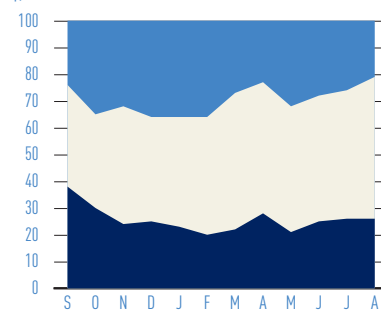
#### ASIA EQUITIES



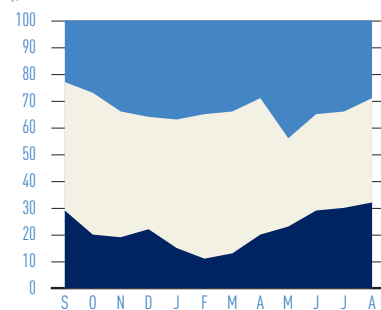
#### UK EQUITIES



#### \$/€



#### \$/¥



#### \$/£

