

# ASSET ALLOCATION IPE QUEST EXPECTATIONS INDICATOR



## Political risk

Now that Germany, France and the UK have significantly increased their military budget, delivery of NATO weapons to Ukraine could neutralise the Russian land and air attack strategy – if the weapons come on time. This would combine with potential discontent within Russia, if Putin breaks his promise of no taxes and no cuts to welfare to balance the government budget.

## Asset allocation

Japan leads the pack in terms of net equity statistics, though the optimism may be overdone. Still, sentiment is converging around +20, with the US recovering some ground from a low base and the

EU and UK slowly climbing down.

Net bond statistics are, except for Japan, also converging, with US bonds gaining some, despite Trump's rhetoric against the independence of the Fed.

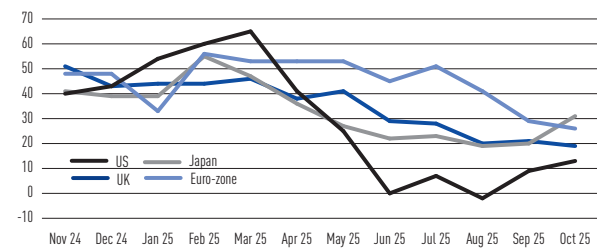
The neutral vote remained at a very high level in all regions, signalling high uncertainty around the impact of US tariffs.

## Country allocation

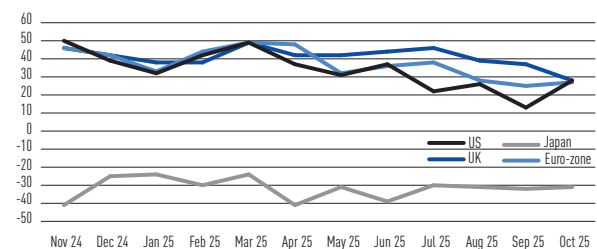
US numbers are up, but still at a low level, with a preference for bonds. EU and UK stats show a flat trend for equity and bonds, but analysts are more pessimistic about UK equities.

**PETER KRANEVELD,**  
**INTERNATIONAL PENSIONS**  
**ADVISER, PRIME BV**

## Net sentiment equities



## Net sentiment bonds

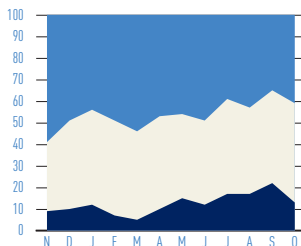


### KEY FOR EXPECTATIONS GRAPHS

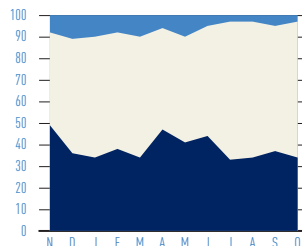
- % of managers expecting rise
- % of managers expecting stability
- % of managers expecting fall

Each month, IPE polls asset managers on their six to 12-month views on regional equities, global bonds and currency pairs as shown below. For more details see pages 2 and 3

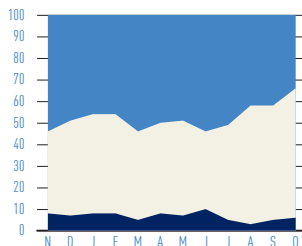
### \$ BONDS



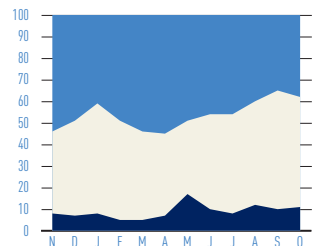
### ¥ BONDS



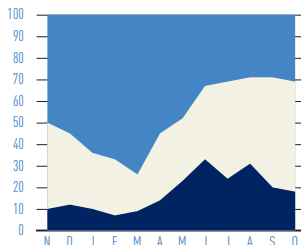
### € BONDS



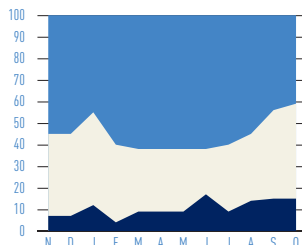
### £ BONDS



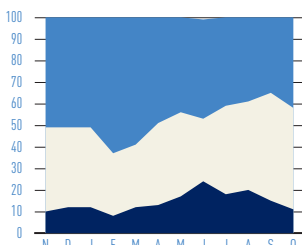
### US EQUITIES



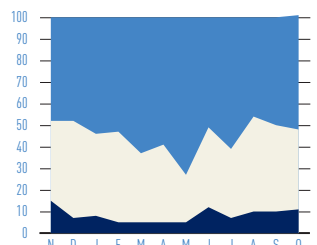
### EURO-ZONE EQUITIES



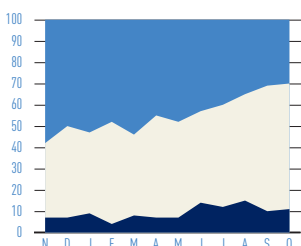
### JAPAN EQUITIES



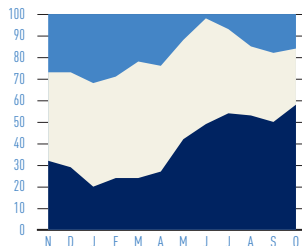
### ASIA EQUITIES



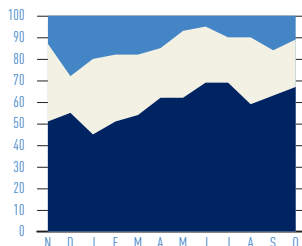
### UK EQUITIES



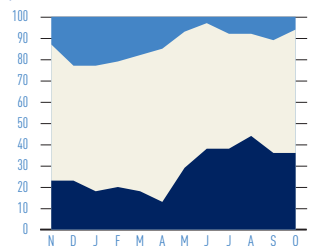
### \$/¥



### \$/£



### \$/€



## ASSET ALLOCATION

## IPE QUEST EXPECTATIONS INDICATOR

▲ **Rise** ↑ Positive shift (from last month)

■ **Stable** – No view

▼ **Fall** ↓ Negative shift (from last month)

IPE polled 39 asset managers this month on their six to 12-month views on regional equities, global bonds and currency pairs as shown below. A summary of the survey appears on page -.

		EQUITIES					BOND PRICES				CURRENCIES		
Location		US	Euro-zone	Japan	Asia	UK	\$	¥	£	€	\$/€	\$/¥	\$/£
AllianceBernstein	US/UK	▲	■	■	▲↑	■	▲	▼	■↓	▲	▼↓	▼	■
Allianz Global Investors	Ger/UK	■	▲↑	▲↑	▲	▲↑	■	▼↓	■↓	■↓	▼	■↑	■↑
Allspring Global Investments	US/UK	▲	▲	▲↑	▲	▲	▲↑	■↓	▲↑	▲↑	▼↓	▼	▼↓
Amundi Asset Management	Fra	▼↓	■↓	■↓	■↓	▼↓	▲↑	■↑	▲	▲	■↑	▼	■↑
Apo Asset Management	Ger	▲	■↓	▲	■↓	■↓	■	▼	■	▼↓	■	■	■
Bank J. Safra Sarasin	Swi	■↑	■	■↑	▼	■↑	▲	■	▲	▲	▼	▼	▼
Bantleon AG	Swi	■	▲	▲	▲	-	▼	-	-	▼	▼	-	-
Berenberg Wealth & Asset Mngt.	Ger	▲	▲	▲	▲	▲	■	■	■	▲↑	▲↑	▲↑	▲↑
BNY Advisors Investment Institute	UK	▼	▼	■↑	■	■	▼	■	▲	■	-	-	-
CBL Asset Management	Lat	■	■	-	-	-	▲	-	-	▲	▲	-	-
Columbia Threadneedle Inv.	US	■	■↑	■	■	■↑	-	-	-	-	■	■	■
Crédit Mutuel Asset Management	Fra	■↓	■	▼	■	■	▼	▼	▼↓	■	▲↑	▲↑	▲↑
Currency Research Associates	US	▼	▼	▼	▼	▼	▲	▲	▲	▲	▼	▼	▼
DWS Investment	Ger	▲↑	▲	▲↑	▲↑	▲↑	▲	▼	▲	▲	■	▼	▼
Econopolis Wealth Management	Bel	■	■	■	■	■	■↑	■	■	■	▼	▼	▼
Edmond de Rothschild AM	Fra	▼	▼	▼	▼	■	■	■	■	■	▼↓	▼↓	▼↓
Erste Asset Management	At	▲↑	■	■	■	■	▲↑	■	■	■	▼	▼	▼
Eurizon Capital	It	■	■	■	■	■	■	■	■	▲	▼	▼	▼
Fideuram Asset Management	It	■	▲	■	▲	▲	■	■	■	■	▼	■	▼
Generali Asset Management	Ger/It	■	▲	▲	▲	▲	▲	▼	▲	▼	▼	▼	▼

	Location	EQUITIES					BOND PRICES				CURRENCIES		
		US	Euro-zone	Japan	Asia	UK	\$	¥	£	€	\$/€	\$/¥	\$/£
GNB Gestao Activos	Por	▲	▲	▲	▲	▲	■	▼	■↓	■	▲	▲	■↓
Graphene Investments	Fra	■	▼↓	▲	■	■	-	-	-	-	▲↑	▼	■
Irish Life Investment Managers	Ire	▲	▲	▲	▲	■	▲	■↑	■↑	▲	▼	▼	■
Mandarine Gestion	Fra	■	▲↑	■	▲↑	■	■	■	▲	■	■	▼	■
MEAG		▲↑	▲	▲↑	▲↑	▲↑	▼	■	■	■	■↓	■↓	■
MFI Asset Management	Ger	▼	▼	▼	▼	▼	■↓	■	■	▲	▼	▼	▼
Morgan Stanley Inv. Mngt.	UK/US	▼	▲	▲	▲	▲	▲	■	■	■	▼	▼	■
Muzinich & Co.	UK	▲	▲	■	▲	■	▲	▼	▲	■	▼	▼	▼↓
Ninety One	UK	▼	▲	▲	▲	▲	▲	▼	■	▲	▼	▼	▼
Oddo BHF Asset Management	Ger	■	■	■	■	■	■	▼	▲	▲	■	▼	■
Ofi Invest Asset Management	Fra	■	■	▲↑	▲	■	▲	▼	▲	■	■	■	■
ONE Swiss Bank	Swi	■	■	■	■	■	■	■↑	■	■	▼	▼	■
Ostrum Asset Management	Fra	■	▼	■	▲	▼↓	■	■	■	▲↑	■	▼	■
Pictet Asset Management	Swi	■	■	■	▲	■	■	■	■	■	▼	■	■
PineBridge Investments	US	■	■	■	■	■	■	■	■	■	▲	■	■
Russell Investments	US	■	■	■	▲	■	▼	■	▼	▼	▼	▼	■
Salus Alpha Capital	Liecht	▲	▲	▲	▲	▲	▲	■	▲	■	■	▲	■
Union Bancaire Privée	Swi	▲	▲	▲	■	■	■↑	■	■	■↑	▼	▼↓	■↑
Union Investment Institutional	Ger	■	■	■	■	■	■	▼↓	■	■	▼↓	▼	■
% predicting rise (previous month)		31 (29)	41 (44)	42 (35)	53 (50)	30 (31)	41 (35)	3 (5)	34 (42)	38 (35)	16 (18)	11 (16)	6 (11)
% predicting stability (previous month)		51 (51)	44 (41)	47 (50)	37 (40)	59 (59)	46 (43)	63 (58)	60 (53)	51 (55)	26 (32)	22 (21)	58 (53)
% predicting fall (previous month)		18 (20)	15 (15)	11 (15)	11 (10)	11 (10)	13 (22)	34 (37)	6 (5)	11 (10)	58 (50)	67 (63)	36 (36)